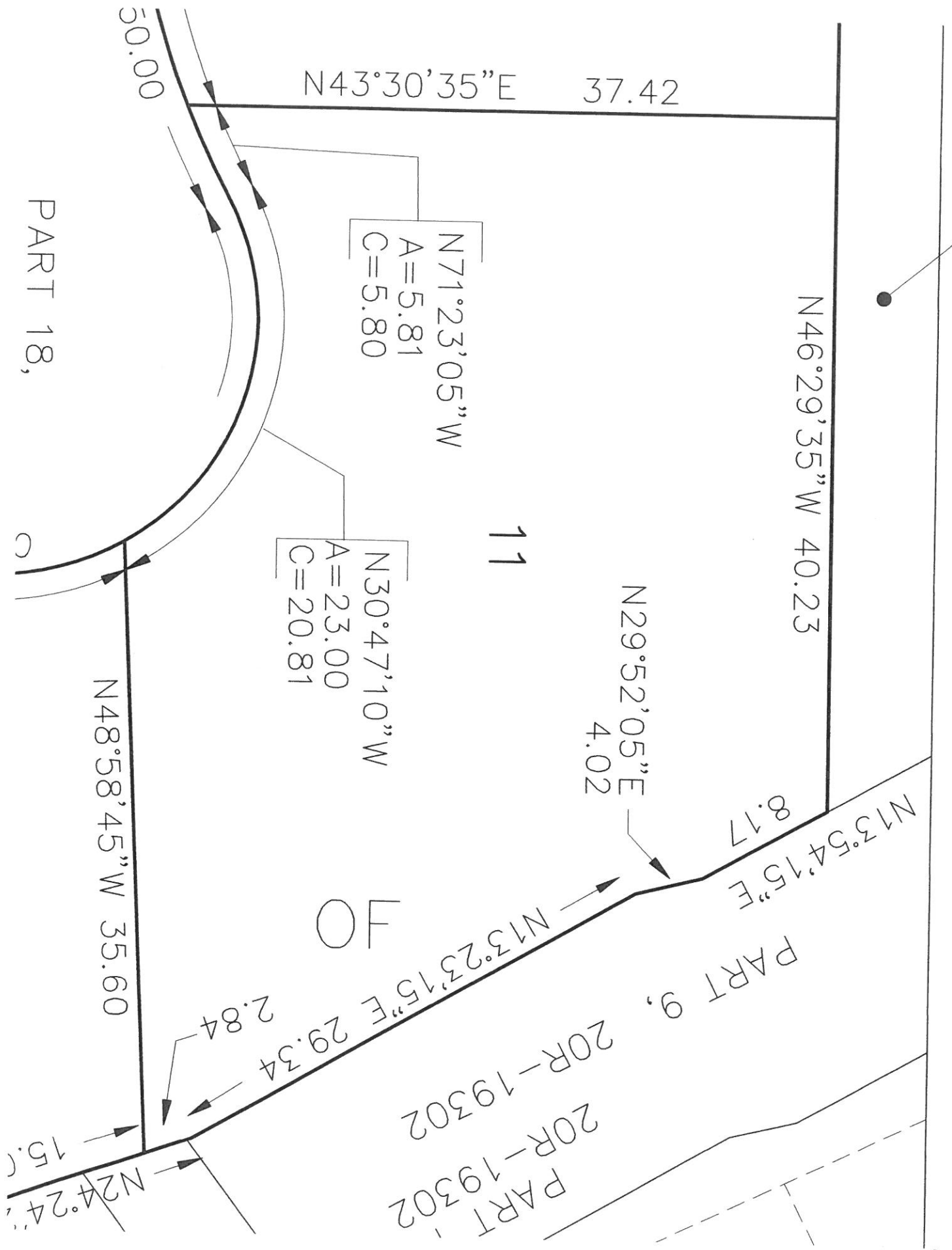


Lot 11



N43°30'35"E 37.42

N46°29'35"W 40.23

N71°23'05"W  
 A=5.81  
 C=5.80

11

N30°47'10"W  
 A=23.00  
 C=20.81

N29°52'05"E  
 4.02

N13°54'15"E  
 8.17

FO

PART 9,

20R-19302  
 29.34  
 2.84

PART  
 20R-19302

N48°58'45"W 35.60

N24°24'  
 15.0

PART 18,

50.00