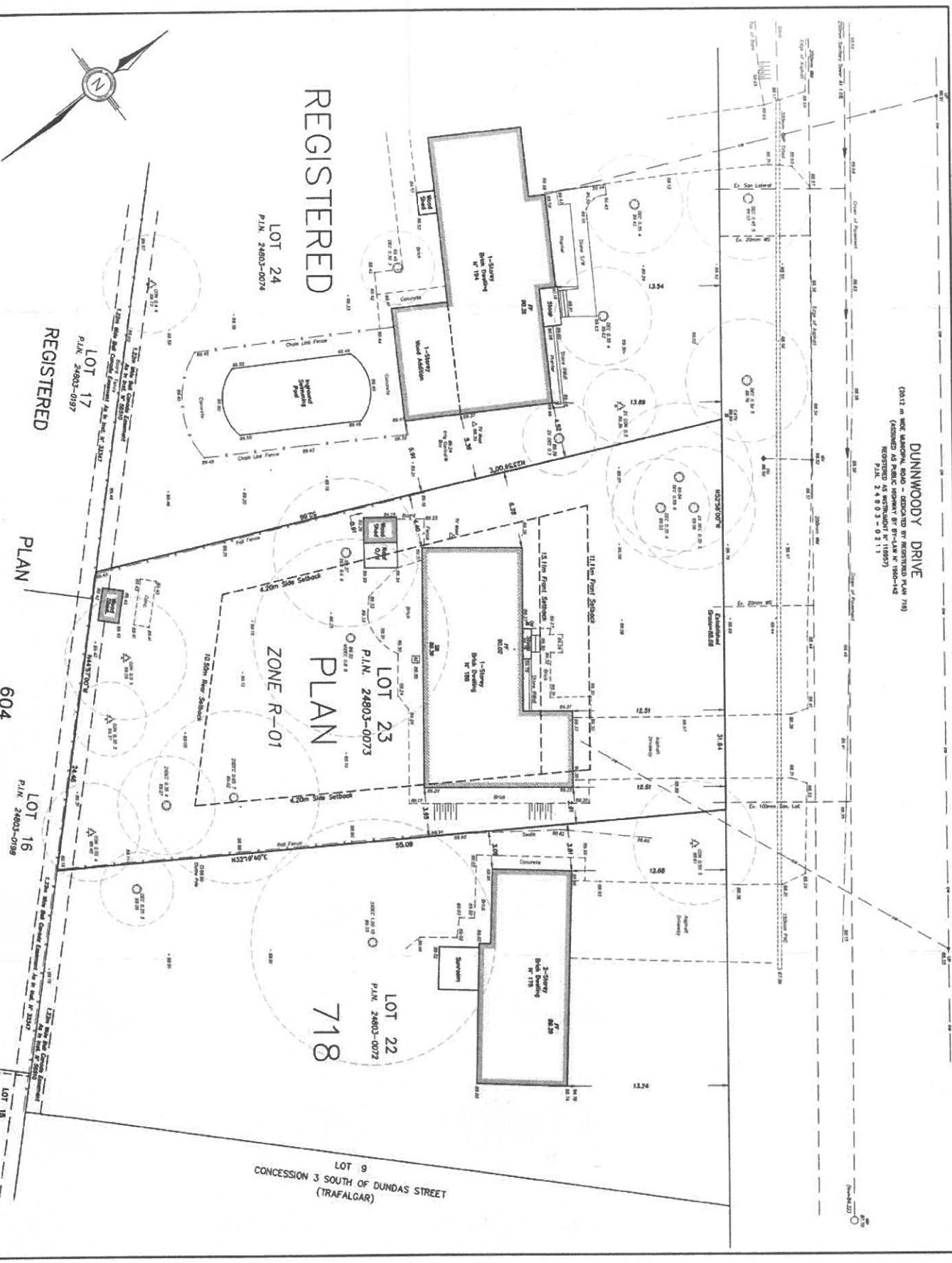


DUNNWOODY DRIVE  
 (2413 m WIDE MUNICIPAL ROAD - CONTROLLED BY REGISTERED PLAN 718)  
 (ASSUMED AS PUBLIC HIGHWAY BY PLAN M-190-142)  
 (REGISTERED AS PUBLIC HIGHWAY BY PLAN M-190-142)  
 P.L.N. 24803-0311



<b>TOPOGRAPHIC SECTION OF</b> <b>REGISTERED PLAN 718</b> <b>TOWN OF OAKVILLE</b> <b>REGIONAL MUNICIPALITY OF HALTON</b>	
<b>KEY PLAN</b> NO. 10 2446 	<b>SITE STATISTICS - ZONE R-01</b> 1. LOT AREA = 2,477.52 M <sup>2</sup> (1.2315 AC ±) (Minimum) 2. LOT FRONTAGE = 60.00 M (196.85 FT) (Minimum) 3. LOT DEPTH = 41.29 M (135.47 FT) (Minimum) 4. LOT COVERAGE = 0.00 (0% Maximum) 5. BUILDING HEIGHT = 11.14 M (36.55 FT) (Maximum) 6. SETBACKS - 0.00 M (0.00 FT) (Minimum) (11.14 M (36.55 FT) (Maximum)) 7. SETBACKS - 0.00 M (0.00 FT) (Minimum) (4.20 M (13.78 FT) (Maximum)) 8. FLOOR AREA = 1,175.00 M <sup>2</sup> (27.32 AC ±) (Maximum)
<b>BOUNDARY NOTE</b> ALL BOUNDARIES SHOWN ARE BASED ON THE RECORD PLAN AND FIELD SURVEY DATA. THE SURVEYOR HAS VISUALLY CHECKED THE BOUNDARIES AND FOUND THEM TO BE CORRECT. <b>ELEVATION NOTE</b> ALL ELEVATIONS SHOWN ARE BASED ON THE RECORD PLAN AND FIELD SURVEY DATA. THE SURVEYOR HAS VISUALLY CHECKED THE ELEVATIONS AND FOUND THEM TO BE CORRECT. <b>TREE NOTE</b> ALL TREES SHOWN ON THIS PLAN ARE BASED ON THE RECORD PLAN AND FIELD SURVEY DATA. THE SURVEYOR HAS VISUALLY CHECKED THE TREES AND FOUND THEM TO BE CORRECT. <b>UTILITY NOTE</b> ALL UTILITIES SHOWN ON THIS PLAN ARE BASED ON THE RECORD PLAN AND FIELD SURVEY DATA. THE SURVEYOR HAS VISUALLY CHECKED THE UTILITIES AND FOUND THEM TO BE CORRECT.	<b>LEGEND</b> 1. 1-Storey Bldg. Footprint 2. 2-Storey Bldg. Footprint 3. 3-Storey Bldg. Footprint 4. 4-Storey Bldg. Footprint 5. 5-Storey Bldg. Footprint 6. 6-Storey Bldg. Footprint 7. 7-Storey Bldg. Footprint 8. 8-Storey Bldg. Footprint 9. 9-Storey Bldg. Footprint 10. 10-Storey Bldg. Footprint 11. 11-Storey Bldg. Footprint 12. 12-Storey Bldg. Footprint 13. 13-Storey Bldg. Footprint 14. 14-Storey Bldg. Footprint 15. 15-Storey Bldg. Footprint 16. 16-Storey Bldg. Footprint 17. 17-Storey Bldg. Footprint 18. 18-Storey Bldg. Footprint 19. 19-Storey Bldg. Footprint 20. 20-Storey Bldg. Footprint 21. 21-Storey Bldg. Footprint 22. 22-Storey Bldg. Footprint 23. 23-Storey Bldg. Footprint 24. 24-Storey Bldg. Footprint 25. 25-Storey Bldg. Footprint 26. 26-Storey Bldg. Footprint 27. 27-Storey Bldg. Footprint 28. 28-Storey Bldg. Footprint 29. 29-Storey Bldg. Footprint 30. 30-Storey Bldg. Footprint 31. 31-Storey Bldg. Footprint 32. 32-Storey Bldg. Footprint 33. 33-Storey Bldg. Footprint 34. 34-Storey Bldg. Footprint 35. 35-Storey Bldg. Footprint 36. 36-Storey Bldg. Footprint 37. 37-Storey Bldg. Footprint 38. 38-Storey Bldg. Footprint 39. 39-Storey Bldg. Footprint 40. 40-Storey Bldg. Footprint 41. 41-Storey Bldg. Footprint 42. 42-Storey Bldg. Footprint 43. 43-Storey Bldg. Footprint 44. 44-Storey Bldg. Footprint 45. 45-Storey Bldg. Footprint 46. 46-Storey Bldg. Footprint 47. 47-Storey Bldg. Footprint 48. 48-Storey Bldg. Footprint 49. 49-Storey Bldg. Footprint 50. 50-Storey Bldg. Footprint 51. 51-Storey Bldg. Footprint 52. 52-Storey Bldg. Footprint 53. 53-Storey Bldg. Footprint 54. 54-Storey Bldg. Footprint 55. 55-Storey Bldg. Footprint 56. 56-Storey Bldg. Footprint 57. 57-Storey Bldg. Footprint 58. 58-Storey Bldg. Footprint 59. 59-Storey Bldg. Footprint 60. 60-Storey Bldg. Footprint 61. 61-Storey Bldg. Footprint 62. 62-Storey Bldg. Footprint 63. 63-Storey Bldg. Footprint 64. 64-Storey Bldg. Footprint 65. 65-Storey Bldg. Footprint 66. 66-Storey Bldg. Footprint 67. 67-Storey Bldg. Footprint 68. 68-Storey Bldg. Footprint 69. 69-Storey Bldg. Footprint 70. 70-Storey Bldg. Footprint 71. 71-Storey Bldg. Footprint 72. 72-Storey Bldg. Footprint 73. 73-Storey Bldg. Footprint 74. 74-Storey Bldg. Footprint 75. 75-Storey Bldg. Footprint 76. 76-Storey Bldg. Footprint 77. 77-Storey Bldg. Footprint 78. 78-Storey Bldg. Footprint 79. 79-Storey Bldg. Footprint 80. 80-Storey Bldg. Footprint 81. 81-Storey Bldg. Footprint 82. 82-Storey Bldg. Footprint 83. 83-Storey Bldg. Footprint 84. 84-Storey Bldg. Footprint 85. 85-Storey Bldg. Footprint 86. 86-Storey Bldg. Footprint 87. 87-Storey Bldg. Footprint 88. 88-Storey Bldg. Footprint 89. 89-Storey Bldg. Footprint 90. 90-Storey Bldg. Footprint 91. 91-Storey Bldg. Footprint 92. 92-Storey Bldg. Footprint 93. 93-Storey Bldg. Footprint 94. 94-Storey Bldg. Footprint 95. 95-Storey Bldg. Footprint 96. 96-Storey Bldg. Footprint 97. 97-Storey Bldg. Footprint 98. 98-Storey Bldg. Footprint 99. 99-Storey Bldg. Footprint 100. 100-Storey Bldg. Footprint
<b>UNDERGROUND SERVICES NOTE</b> ALL UTILITIES SHOWN ON THIS PLAN ARE BASED ON THE RECORD PLAN AND FIELD SURVEY DATA. THE SURVEYOR HAS VISUALLY CHECKED THE UTILITIES AND FOUND THEM TO BE CORRECT. <b>SURVEYOR'S NOTE</b> THIS PLAN WAS PREPARED FOR THE DESIGN PROFESSIONALS ONLY. IT IS NOT VALID FOR ANY OTHER PURPOSES. DATE: JAN 4, 2012 SURVEYOR: [Signature]	<b>CUNNINGHAM McCONNELL LIMITED</b> 1000 SHEPPARD AVENUE EAST, SUITE 200 SCARBOROUGH, ONTARIO M1S 1T7 TEL: (416) 291-1111 FAX: (416) 291-1112 WWW.CUNNINGHAMMCCONNELL.COM PLAN 13-13-2