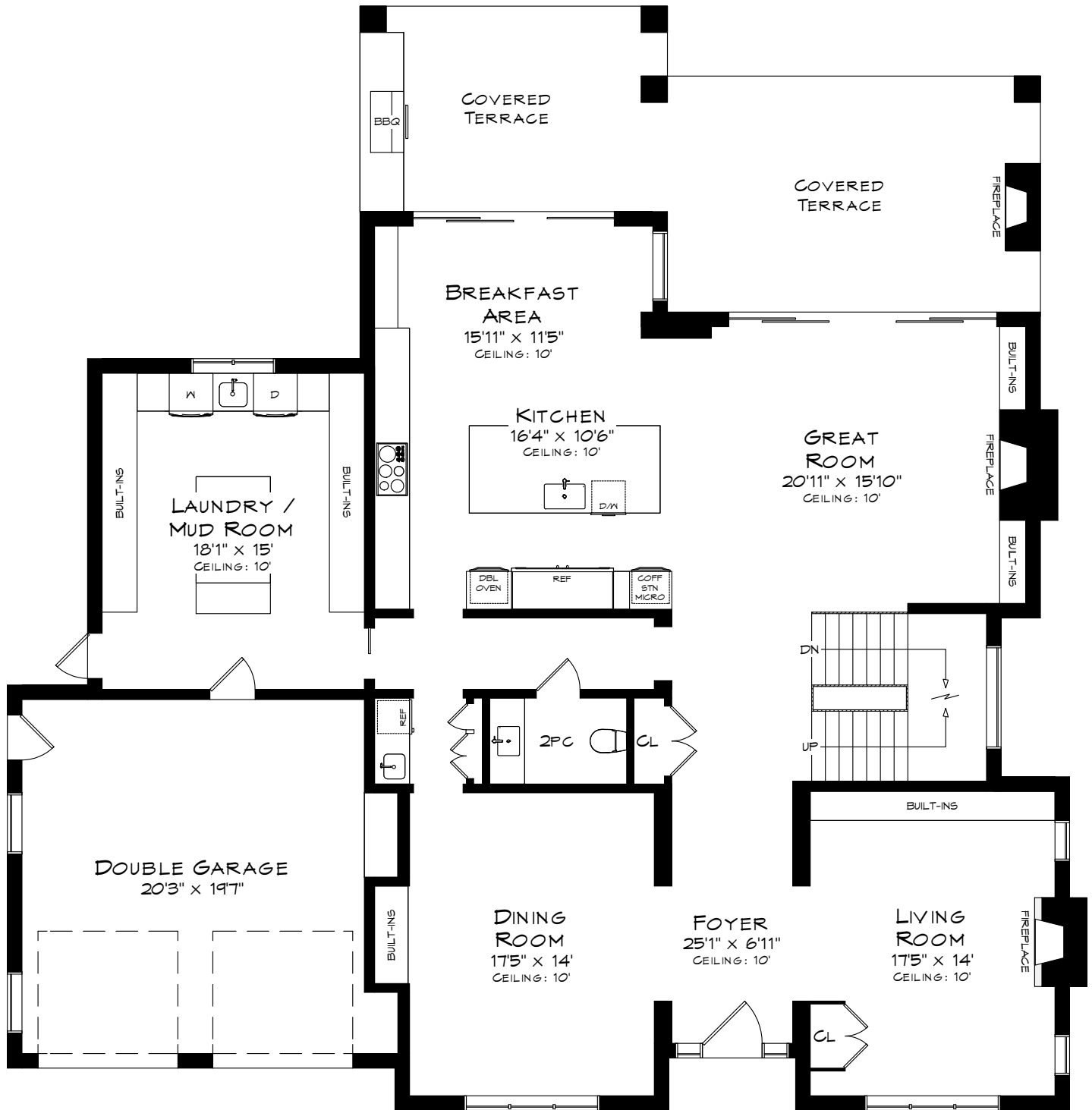
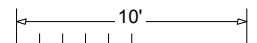


2055 DEVON ROAD

TOTAL SQUARE FOOTAGE
6,820 SQ.FT.

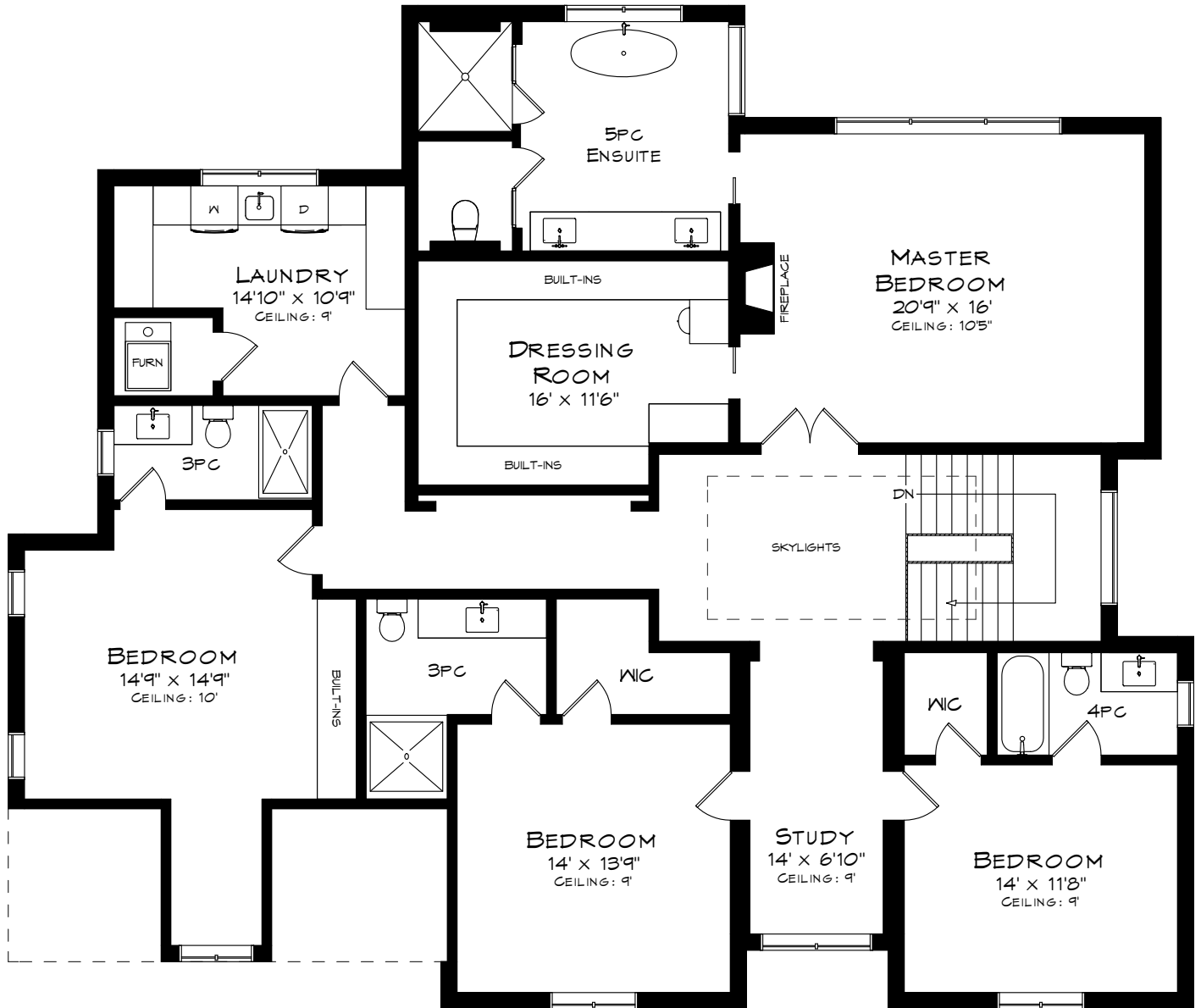


MAIN LEVEL
2,156 SQUARE FEET
+ 453 SF (GARAGE)

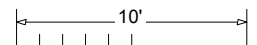


Measurements may not be 100% accurate
and should be used as a guideline only.
October - 2020

2055 DEVON ROAD

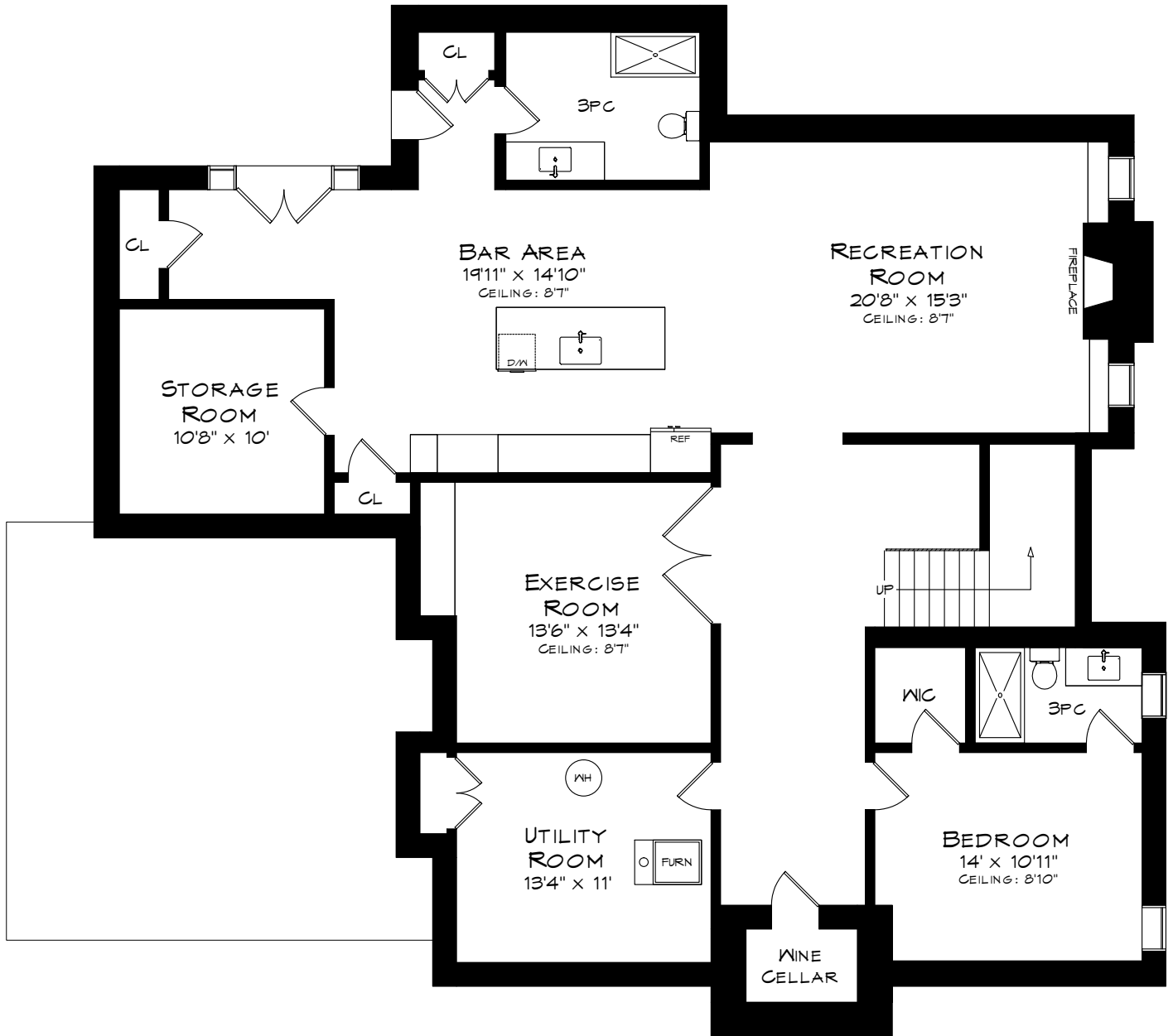


UPPER LEVEL
2,467 SQUARE FEET

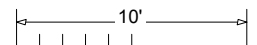


Measurements may not be 100% accurate
and should be used as a guideline only.
October - 2020

2055 DEVON ROAD



LOWER LEVEL
2,197 SQUARE FEET



Measurements may not be 100% accurate
and should be used as a guideline only.
October - 2020